

OPENING DOORS SINCE 1843

Loveitts est. 1843
THE ESTATE AGENTS

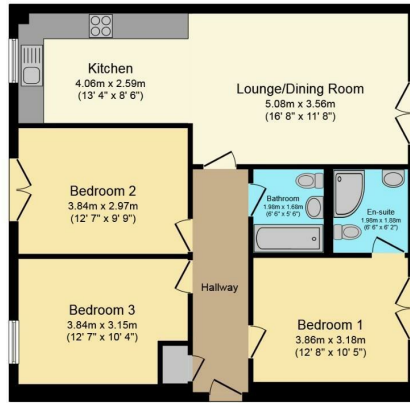


Kingswood Road, Nuneaton, CV10 8QY

£160,000



Floor Plan



Floor Plan

Floor area 81.8 sq.m. (881 sq.ft.) approx

Total floor area 81.8 sq.m. (881 sq.ft.) approx

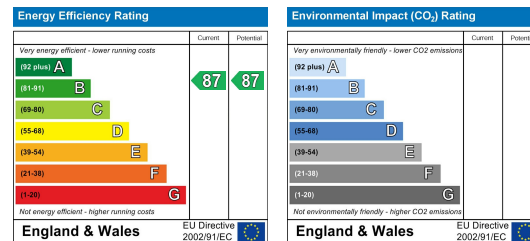
This Floor Plan is for illustration purposes only and may not be representative of the property. The position and size of doors, windows and other features are approximate. Unauthorised reproduction prohibited. © PropertyRICK

- Purpose Built First Floor Apartment
- Spacious Open Plan Lounge & Kitchen
- Modern Kitchen With Integrated Hob & Oven
- Three Good Size Bedrooms
- En Suite Shower Room
- Family Bathroom
- Gas Central Heating
- PVCu Double Glazing
- Allocated Vehicle Parking & Communal Garden
- No Upward Chain

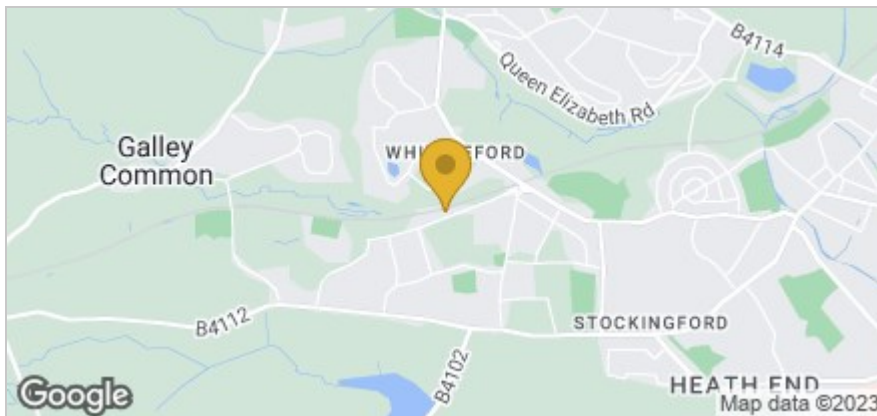
Viewing

Please contact our Nuneaton Office on 024 7634 7676 if you wish to arrange a viewing appointment for this property or require further information.

Energy Efficiency Graph



Area Map



These particulars, whilst believed to be accurate are set out as a general outline only for guidance and do not constitute any part of an offer or contract. Intending purchasers should not rely on them as statements of representation of fact, but must satisfy themselves by inspection or otherwise as to their accuracy. No person in this firm's employment has the authority to make or give any representation or warranty in respect of the property.



Nuneaton
 39 Church Street, Nuneaton CV11 4AD
 024 7634 7676

Registered in England & Wales Company no. 7558151